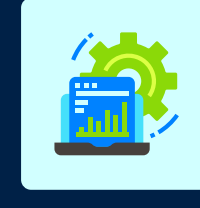
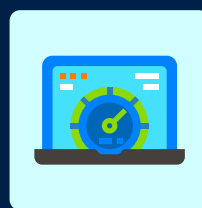




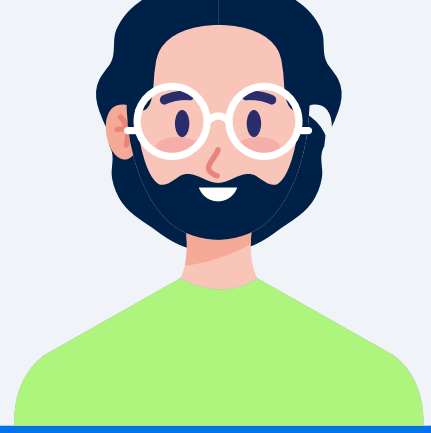
Why choose Companial for CSP?

The safest indirect cloud solution provider choice for any Microsoft Business Applications Partner

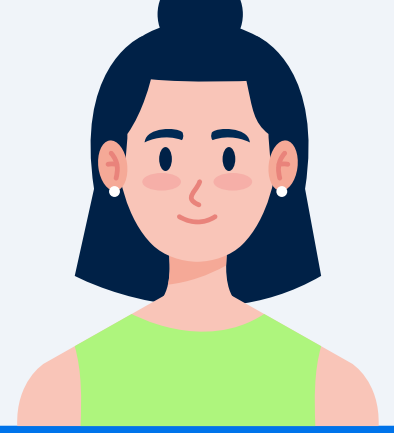


If you're looking for a Microsoft indirect cloud solution provider, you have plenty of options to choose from. What sets Companial apart is that we've decided to prioritize on expertise over volume, and local and personal contact over outsourced Service Desks. We support partners new to the Cloud Solution Program with profound training and guidance, and help even the most experienced Partners in solving complex technical challenges. Expertise and experience come with deep focus, and that is why the Microsoft Business Applications, Dynamics 365, and Power Platform are at the heart of what we do. We are the best option for all the Dynamics and Power Platform resellers out there.

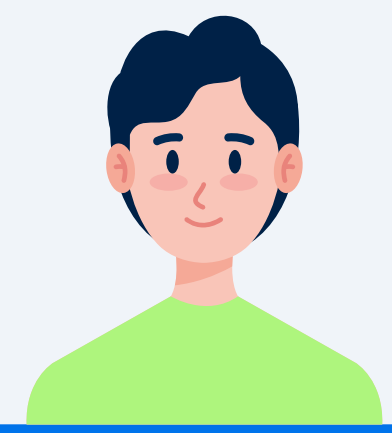
Are you new to Dynamics or CSP?



Are you buying licences directly from Microsoft?



Are you in Dynamics business using another indirect provider?



Join Companial, the largest Dynamics partner community...



Start reselling all Microsoft solutions including Dynamics 365 and Power Platform.



Offer out-of-the-box customer self-service to add, change, or cancel subscriptions.



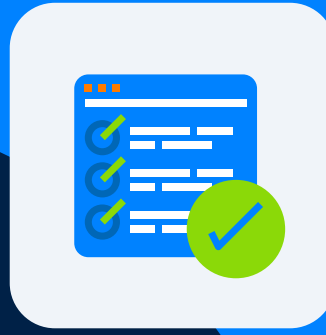
Access in-depth Microsoft Business Applications expertise.



Join the learning center for Dynamics professionals.



Stay up to date with Microsoft licensing, programs, and technology changes.



Utilize an extensive services portfolio to create capacity, strengthen implementation, and support capabilities.



Enjoy automated license provisioning, billing, and customer management platform.



Accelerate go-to-market, digitalization, and cloud transformation.

What will you get by partnering with us?

- ✓ an **open and approachable** partner in business (or a 'Companial', as we call it)
- ✓ the **assurance** that comes from years of experience in Microsoft Business Applications (from sales and ordering, to marketing to technical skills)
- ✓ **updates** that are brought to you in a timely and tailored way
- ✓ **scalable and smart** (preferably automated) technical services to resolve capacity issues
- ✓ one-on-one **guidance** where a special approach is required
- ✓ **access** to smart IT tools that help you run your business in an efficient manner
- ✓ membership in a diverse and international **community** of resellers and ISVs to interact and collaborate with.

Or in short: we help you to achieve growth, and work to remove any obstacles to you doing so!

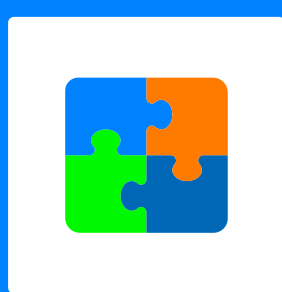
Memberships



Partner Support



News & Events



Order & Supply tooling

+ Service Funds

complete the offer with services that are relevant to you

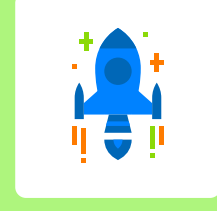
Services



Readiness

Ready to Start

Companial Academy



Business Acceleration

Take the Lead

Business Strategy Workshop



Technical Enablement

Upgrade Services

Hosting Services

Extension/Solution Maintenance

Development Services

Technical Consultancy



Community



Competency



Capacity

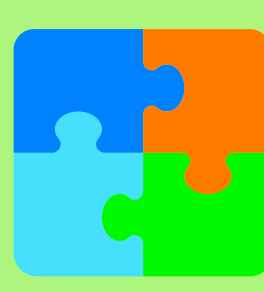


Capability

As Companial we



Serve a network of over 1000 Microsoft partners in 75 countries

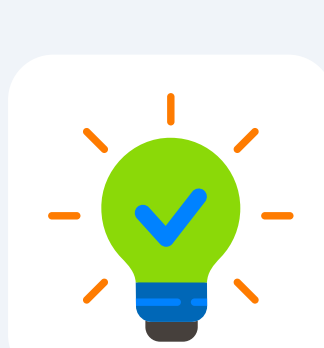


Work with a team of over 200 fanatical Microsoft experts

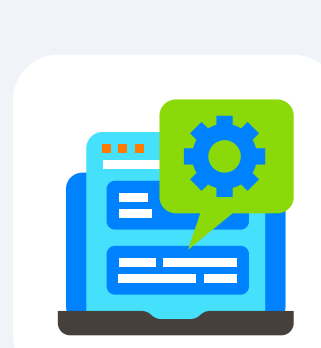


Always perform our work with a personal and local focus from our offices in 7 different countries

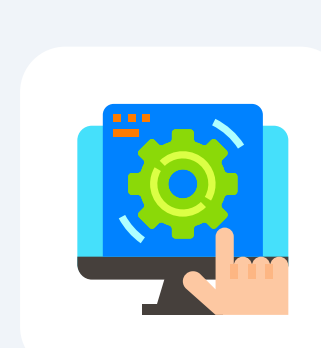
How to join Companial?



Choose the membership that fits you best



Get onboarded



Enjoy the convenience

Check out our membership levels at <https://companial.com/memberships/> or contact us at service@companial.com if you have any questions.